



HAL
open science

A Case of Generalized Interstitial Granuloma Annulare and Arthritis Associated with Breast Cancer

Ariane Clapé, Clélia Vanhaecke, Anne Durlach, Philippe Bernard, Christelle Jouannaud, Laurie Kpodar, Bernard Cribier, Manuelle Viguié

► **To cite this version:**

Ariane Clapé, Clélia Vanhaecke, Anne Durlach, Philippe Bernard, Christelle Jouannaud, et al. A Case of Generalized Interstitial Granuloma Annulare and Arthritis Associated with Breast Cancer. *Acta Dermato-Venereologica*, 2019, 99 (2), pp.244-245. 10.2340/00015555-3056 . hal-02453719

HAL Id: hal-02453719

<https://hal.univ-reims.fr/hal-02453719v1>

Submitted on 29 May 2020

HAL is a multi-disciplinary open access archive for the deposit and dissemination of scientific research documents, whether they are published or not. The documents may come from teaching and research institutions in France or abroad, or from public or private research centers.

L'archive ouverte pluridisciplinaire **HAL**, est destinée au dépôt et à la diffusion de documents scientifiques de niveau recherche, publiés ou non, émanant des établissements d'enseignement et de recherche français ou étrangers, des laboratoires publics ou privés.

A Case of Generalized Interstitial Granuloma Annulare and Arthritis Associated with Breast Cancer

Ariane CLAPÉ¹, Clélia VANHAECKE^{1*}, Anne DURLACH², Philippe BERNARD¹, Christelle JOUANNAUD³, Laurie KPODAR⁴, Bernard CRIBIER⁵ and Manuelle VIGUIER¹

¹Department of Dermatology, Reims University Hospital, University of Reims Champagne-Ardenne, Avenue du general Koenig, FR-51092 Reims Cedex, ²Biopathology, Hospital Maison Blanche, Reims University Hospital, ³Department of Medical Oncology, Jean Godinot Institut, Reims, ⁴Department of Rheumatology, Manchester Hospital, Charleville Mézières, and ⁵Dermatopathology and Dermatology, Faculty of Medicine, University of Strasbourg, University Hospital of Strasbourg, Strasbourg, France. *E-mail: cvanhaecke@chu-reims.fr
Accepted Oct 3, 2018; E-published Oct 3, 2018

Granuloma annulare (GA) is a benign inflammatory skin disease of unknown origin, classically presenting with self-limited, skin-coloured to erythematous, papules with ring-shaped distribution with no epidermal changes, often located on the dorsal surfaces of the hands and feet.

Several clinical variants of GA have been described, including generalized GA, subcutaneous GA, and perforating GA. GA shows typically palisading granulomas with a central zone of necrobiotic collagen surrounded by a palisade of histiocytes associated with mucin deposition. An interstitial histopathological pattern is also described, consisting of lymphohistiocytic infiltrate scattered between and around collagen bundles and around blood vessels in the reticular and papillar dermis. Finally, subcutaneous histopathological patterns are also reported.

With the exception of diabetes, no consistently associated systemic disorder is identified in GA, and it is not usually considered as a paraneoplastic syndrome. We report here an unusual case of diffuse interstitial generalized GA in association with breast cancer.

CASE REPORT

A 45-year-old woman was referred to our dermatology unit with a 4-month history of an extensive rash with large erythematous pruritic papulous plaques (Fig. 1 a, b). The lesions initially involved sun-exposed sites, and rapidly spread on the limbs, trunk and face with no eyelid involvement. The patient reported symmetrical polyarthritis of the ankles, knees and wrists, in association with high-grade fever, marked asthenia and 15 kg weight loss. No myalgia, motor deficit or synovitis was present. Physical examination revealed a voluminous left mammary tumour T2 (5 cm) and palpable axillary lymph nodes N1 (6 cm). Her medical history was marked by diabetes mellitus (DM) and dyslipidaemia. Creatine kinase and aldolase concentrations were normal, antinuclear antibodies titre was 1:400 with speckled pattern. Tests for anti-extractable nuclear antibodies, anti-double-stranded DNA, anti J0-1 antibodies, rheumatoid factor and anti-cyclic citrullinated peptide antibodies were negative. There was no specific radiological damage in the peripheral joints. Cutaneous biopsies revealed a histiocytic infiltrate, with no multinucleated giant cells, in an interstitial and diffuse pattern from the papillary to the reticular dermis, with no interface dermatitis. Immunohistochemical stains showed diffuse CD68⁺ and CD163⁺ histiocytes (Fig. 2).

The clinical presentation and histopathological findings led to the diagnosis of diffuse interstitial generalized GA. Breast biopsy revealed an invasive papillary carcinoma, SBR (Scarff Bloom Richardson) III, mitotic index 2, no embolus, oestrogen-receptor-positive (10%), progesterone-receptor-negative, human

epidermal growth factor receptor type 2 (HER2) 1+. Whole-body 18-fluorodeoxyglucose positron emission tomography detected left axillary lymph node metastasis, but no distant metastasis. The patient was treated with a neoadjuvant chemotherapy, including 5 fluorouracil, epirubicin and cyclophosphamide (FEC 100 protocol) and transient oral morphine for joint pain. Complete resolution of arthritis and cutaneous manifestations was reported 2 months after the onset of chemotherapy, with no other specific treatment (Fig. 1c, d). No recurrence of the eruption was observed during the whole treatment (4 cycles of FEC 100, 12 perfusions of taxol, tumorectomy and axillary lymphadenectomy, radiotherapy) and under current hormonotherapy with a follow-up of 14 months. To date, the cancer is in remission.

DISCUSSION

The clinical presentation of this patient was atypical for GA, with large erythematous papulous plaques with an active border, involving a large skin surface. The lack of annular disposition was particularly puzzling; nevertheless, non-annular lesions are usual in the generalized variety of GA (1, 2). The diagnosis of multicentric reticulohistiocytosis (MRH) could also have been suspected because of concomitant polyarthritis and association with tumoural syndrome. Indeed, this rare systemic



Fig. 1. Clinical photographs at the time of breast cancer diagnosis, showing symmetrically large erythematous papulous plaques involving: (a) chest; (b) thigh, after 2 cycles of neoadjuvant chemotherapy for breast cancer with residual post-inflammatory pigmentation involving the same locations as the initial lesions: (c) chest and (d) thigh.

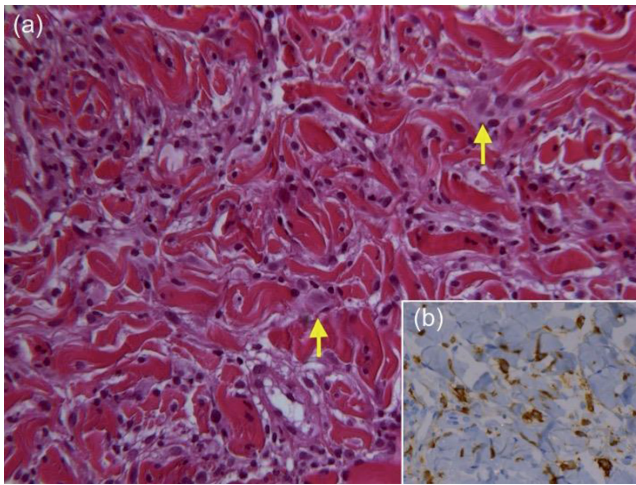


Fig. 2. Histopathological findings. (a) Haematoxylin-eosin stain (magnification $\times 250$): lymphocytic and histiocytic (yellow arrows) infiltrate scattered between and around collagen bundles and around blood vessels with no multinucleated giant cells in an interstitial and diffuse pattern in the dermis. (b) Immunohistochemical CD163 stain (magnification $\times 250$): interstitial and diffuse positive histiocytes.

inflammatory granulomatous disease is characterized by cutaneous papulonodules and severe and rapidly progressive polyarthritis, with association with various malignancies in up to 25% of cases (3). Nevertheless, the classical MRH histopathological findings, i.e. infiltrate of histiocytic prominent multinucleated giant cells with eosinophilic “ground-glass” cytoplasm (4), were not observed in our patient’s biopsies. The association in this case of polyarthritis was also puzzling, with a strong parallel evolution of skin and joints symptoms, leading us to consider, together with the rich interstitial histiocytic infiltrate observed in the dermis, the diagnosis of interstitial granulomatous dermatitis (IGD). Nevertheless, other histopathological characteristics of IGD were not observed. The histiocytic infiltrate involved the whole height of the dermis, including the papillary dermis, while it involves only the middle and deep dermis in IGD. Moreover, the collections of histiocytes were scattered homogeneously between and around collagen bundles, and around blood vessels, while focal areas of palisading around necrotic collagen fibres are seen in IGD. Altogether, these key histopathological characteristics favoured the diagnosis of the diffuse interstitial pattern of GA (5, 6). The occurrence of arthritis has indeed been described in generalized GA (2), while we cannot exclude that it was also part of a paraneoplastic syndrome, as reported in the course of several malignant neoplasms, including breast cancer (7, 8).

Regarding the underlying conditions presented by our patient, diabetes and dyslipidaemia are diseases widely reported to be associated with GA (1, 2, 9). Importantly, a few cases of GA associated with malignant neoplasms have also been described (10–12), more specifically in generalized GA (2, 13, 14). A previous case of a GA in a 52-year-old woman, preceding by one month the

diagnosis of breast cancer, resolved one month after mastectomy and recurred one month before metastasis (12). While the wide variation in the time-span between cancer and GA occurrence reported in the literature usually does not suggest a causative relationship (2, 10, 15), the delay between the onset of GA and the discovery of breast cancer in our case, was short, and the treatment of the underlying malignancy resulted in regression of the dermatological and rheumatological disorder. Spontaneous resolution of GA can be expected, but is rarely observed in generalized GA (1, 2).

We report here a case of generalized interstitial GA associated with polyarthritis, with a strong suspicion of both manifestations being paraneoplastic.

The authors have no conflicts of interest to declare.

REFERENCES

1. Yun JH, Lee JY, Kim MK, Seo YJ, Kim MH, Cho KH, et al. Clinical and pathological features of generalized granuloma annulare with their correlation: a retrospective multicenter study in Korea. *Ann Dermatol* 2009; 21: 113–119.
2. Dabski K, Winkelmann RK. Generalized granuloma annulare: clinical and laboratory findings in 100 patients. *J Am Acad Dermatol* 1989; 20: 39–47.
3. Tajirian AL, Malik MK, Robinson-Bostom L, Lally EV. Multicentric reticulohistiocytosis. *Clin Dermatol* 2006; 24: 486–492.
4. Goltz RW, Laymon CW. Multicentric reticulohistiocytosis of the skin and synovia; reticulohistiocytoma or ganglioneuroma. *AMA Arch Derm Syphilol* 1954; 69: 717–731.
5. Ackerman AB. Histologic diagnosis of inflammatory skin diseases: interstitial granulomatous dermatitis with arthritis. In: Ackerman AB, Guo Y, Vitale P, Patricia A, editors. *Clues to diagnosis in dermatopathology*, 1st edn, vol. 3. Chicago, IL: ASCP Press; 1993: p. 309–312.
6. Cribier B. Granuloma annulare. *Ann Dermatol Venereol* 2005; 132: 584–586.
7. Hakkou J, Rostom S, Bahiri R, Hajjaj-Hassouni N. Paraneoplastic rheumatic syndromes: report of eight cases and review of literature. *Rheumatol Int* 2012; 32: 1485–1489.
8. Morel J, Deschamps V, Toussiot E, Pertuiset E, Sordet C, Kieffer P, et al. Characteristics and survival of 26 patients with paraneoplastic arthritis. *Ann Rheum Dis* 2008; 67: 244–247.
9. Studer EM, Calza AM, Saurat JH. Precipitating factors and associated diseases in 84 patients with granuloma annulare: a retrospective study. *Dermatology* 1996; 193: 364–368.
10. Li A, Hogan DJ, Sanusi ID, Smoller BR. Granuloma annulare and malignant neoplasms. *Am J Dermatopathol* 2003; 25: 113–116.
11. Barksdale SK, Perniciaro C, Halling KC, Strickler JG. Granuloma annulare in patients with malignant lymphoma: clinicopathologic study of thirteen new cases. *J Am Acad Dermatol* 1994; 31: 42–48.
12. Stewart KA, Cooper PH, Greer KE, Kersh CR. Granuloma annulare temporally associated with carcinoma of the breast. *J Am Acad Dermatol* 1989; 21: 309–311.
13. Shimizu S, Yasui C, Tsuchiya K. Atypical generalized granuloma annulare associated with two visceral cancers. *J Am Acad Dermatol* 2006; 54: S236–238.
14. Jacobson RK, Antia C, Sharaf MA. Disseminated interstitial granuloma annulare associated with hepatocellular carcinoma. *Clin Exp Dermatol* 2018 May 17. [Epub ahead of print].
15. Cohen PR. Granuloma annulare, relapsing polychondritis, sarcoidosis, and systemic lupus erythematosus: conditions whose dermatologic manifestations may occur as hematologic malignancy-associated mucocutaneous paraneoplastic syndromes. *Int J Dermatol* 2006; 45: 70–80.