



**HAL**  
open science

## Preliminary results on a proposed histopathological assessment of predictive factors for basal cell carcinoma recurrence after primary free margin excision

A. Jacquet, V. Dormoy, M. Lorenzato, Anne Durlach

### ► To cite this version:

A. Jacquet, V. Dormoy, M. Lorenzato, Anne Durlach. Preliminary results on a proposed histopathological assessment of predictive factors for basal cell carcinoma recurrence after primary free margin excision. *Skin Health and Disease*, Wiley, 2022, 2 (2), pp.e88. 10.1002/ski2.88 . hal-03701414

**HAL Id: hal-03701414**

**<https://hal.univ-reims.fr/hal-03701414>**

Submitted on 22 Jun 2022

**HAL** is a multi-disciplinary open access archive for the deposit and dissemination of scientific research documents, whether they are published or not. The documents may come from teaching and research institutions in France or abroad, or from public or private research centers.

L'archive ouverte pluridisciplinaire **HAL**, est destinée au dépôt et à la diffusion de documents scientifiques de niveau recherche, publiés ou non, émanant des établissements d'enseignement et de recherche français ou étrangers, des laboratoires publics ou privés.



Distributed under a Creative Commons Attribution| 4.0 International License

## PERSPECTIVE

# Preliminary results on a proposed histopathological assessment of predictive factors for basal cell carcinoma recurrence after primary free margin excision

A. Jacquet<sup>1</sup> | V. Dormoy<sup>2</sup>  | M. Lorenzato<sup>1</sup> | A. Durlach<sup>1,2</sup> 

<sup>1</sup>Service of Pathology, CHU Reims, University Hospital of Reims, Reims, France

<sup>2</sup>Inserm, P3Cell UMR-S1250, SFR CAP-SANTE, University of Reims Champagne-Ardenne, Reims, France

**Correspondence**

Anne Durlach, Service of Pathology, CHU Reims, University Hospital of Reims, 51092 Reims, France.  
Email: [adurlach@chu-reims.fr](mailto:adurlach@chu-reims.fr)

**Funding information**

Institut National de la Santé et de la Recherche Médicale; Université de Reims Champagne-Ardenne

**Abstract**

**Background:** Basal cell carcinoma (BCC) incidence is steadily increasing but therapeutic solutions remain limited and present a public health challenge.

**Aims:** To identify predictive factors of BCC recurrence after primary free margin excision, with automated methods, by evaluating cell proliferation, the Hedgehog pathway activation and primary cilia.

**Materials and Methods:** This case–control study included 32 patients (16 with recurrence occurring at least 6 months after complete resection, and 16 without recurrence) who underwent surgery for BCC. Formalin-fixed paraffin-embedded cutaneous resections were processed for immunohistochemistry or immunostaining with the following primary antibodies: mouse anti-MCM6, rabbit anti-ARL13B and rabbit anti-GLI1.

**Results:** BCC recurrence after free margin excision was significantly linked to a higher proliferative index ( $p < 0.001$ ) and a lower cilia count ( $p = 0.041$ ) in the primary lesion. No significant differences were observed regarding cilia length ( $p = 0.39$ ) or GLI1-positive nuclei.

**Discussion:** The complex interplay between essential signaling pathways, cell proliferation and cilia requires further experimental investigations in the context of BCC recurrence.

**Conclusion:** A higher proliferative index evaluated with MCM6 antibody could be a useful prognosis marker of BCC risk of recurrence. The lower cilia count in the primary lesion unveiled novel perspectives to understand BCC recurrence molecular mechanisms.

## 1 | INTRODUCTION

Basal cell carcinoma (BCC) is the most common skin cancer in Caucasians and the most frequent of all cancers. Its incidence is steadily increasing, but therapeutic solutions remain limited and present a public health challenge.<sup>1</sup> Recurrence of BCC after primary free margin excision occurs within approximately 2%–10%.<sup>2</sup>

Different proliferative index markers have been extensively studied in BCC, but analyses remained controversial.<sup>3,4</sup> Mini Chromosome Maintenance proteins (MCM 2–7) are required for cell cycle initiation and DNA replication. They are expressed throughout the cell cycle including cells leaving G0 to enter the early G1 phase, unlike the Ki67 assessments.<sup>5</sup> MCM6 demonstrated its interest in other cancers,

This is an open access article under the terms of the Creative Commons Attribution License, which permits use, distribution and reproduction in any medium, provided the original work is properly cited.

© 2021 The Authors. Skin Health and Disease published by John Wiley & Sons Ltd on behalf of British Association of Dermatologists.

TABLE 1 Clinical and histological characteristics of BCC

	Recurrent BCC (n = 16)	Non-recurrent BCC (n = 16)	p-value
Age (mean, year) +/-SD	71.2 +/-11.02	65.29 +/-11.2	0.14
Sex ratio M/F	8/8	8/8	
Head and neck/Trunk localization	7/1	7/1	
Histological subtypes			
Nodular	6	6	
Superficial	1	1	
Infiltrative	8	8	
Basosquamous	1	1	
Tumour length (mm, mean) +/-SD	5.75 +/-0.71	7.56 +/-3.64	0.05
Lateral margin (mm)			
<1	7	3	0.11
1–3	9	12	
>3	0	1	
Deep margin (mm)	1.47 +/-0.84	1.82 +/-1.28	0.35
Ulceration	10	7	0.31
TILs			
Absent	7	9	0.41
Brisk	8	7	
Non-brisk	1	0	

Note: Brisk TILs are present throughout the vertical growth phase or across the entire base of the tumour; non-brisk TILs focally infiltrate the tumour. Abbreviations: BCC, basal cell carcinoma; TILs, tumour-infiltrating lymphocytes.

such as breast cancer or brain cancer, with a significant clinical association with prognosis or survival in patients.<sup>6</sup>

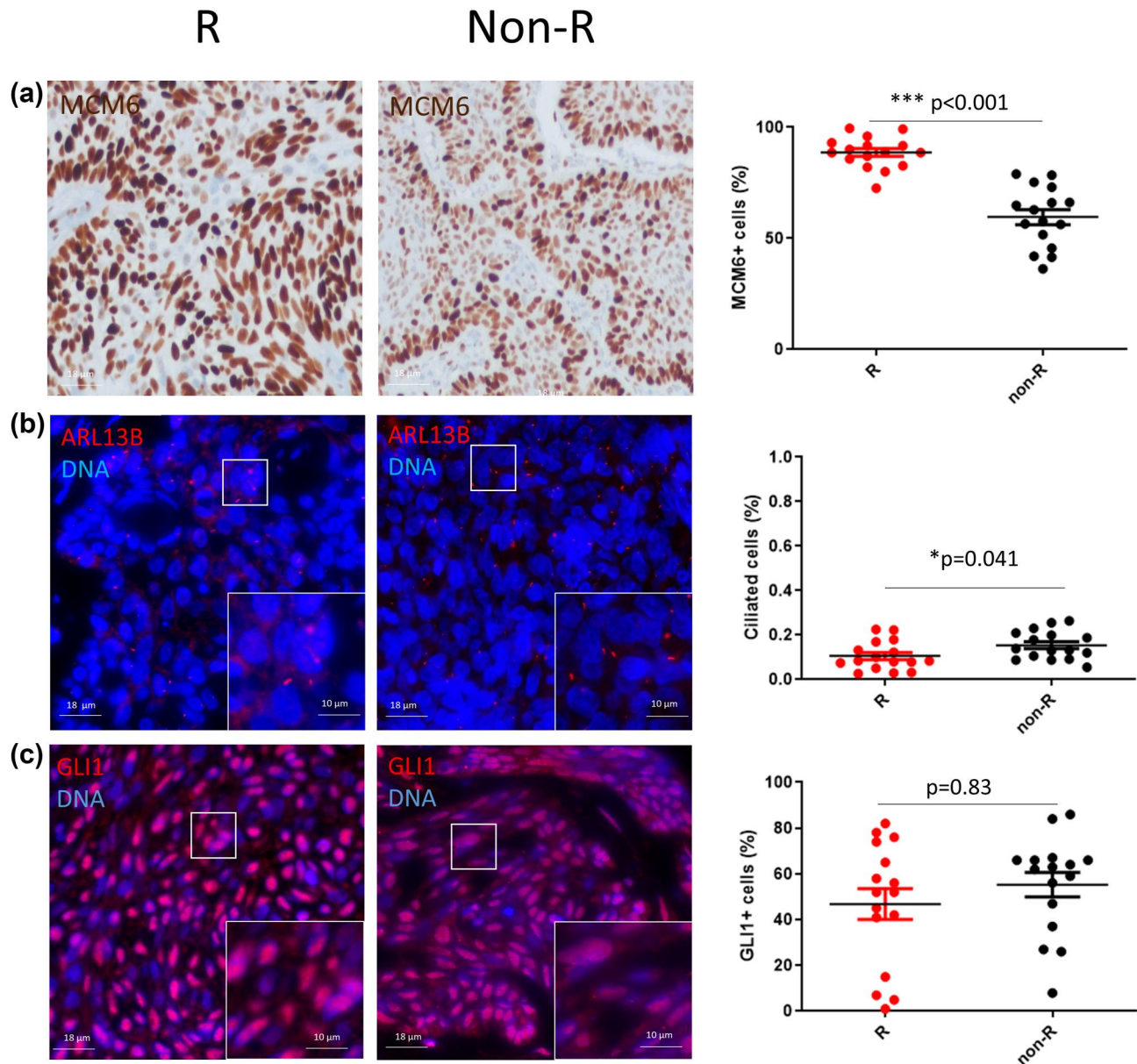
Recent advances in the understanding of the Hedgehog signalling pathway (specifically GLI1), inherently associated with primary cilia, and its role in BCC pathogenesis led to the introduction of new treatments significantly improving clinical outcomes in unresectable, recurrent or metastatic lesions.<sup>7</sup> Therefore, cilia identification became an active area of investigation in BCC. ARL13B-antibody highlights the presence of cilia. This small GTPase operates early in the formation and maintenance of cilia. We hypothesized that ARL13b is a stronger marker of primary cilia to differentiate two BCC that are ciliated. Indeed, most studies analysed primary cilia with acetylated  $\alpha$ -tubulin antibody which underlines cilia presence but also cytoplasmic acetylated cilia. On the contrary, ARL13B is more restrictive: it migrates early during ciliogenesis inside the cilium before acetylation occurs and is found in very low intracytoplasmic levels.<sup>8</sup>

The present study aimed to identify predictive factors of BCC recurrence after primary free margin

excision, with automated methods, by evaluating the proliferative activity, the Hedgehog pathway activation and cilia formation.

## 2 | REPORT

On a preliminary screen, we selected 281 patients with more than 2 BCC histories (2009–2015 period). Then, we selected 59 patients with two BCC at the same localization as assessed with the dermatology department photo database. When the primary diagnosis was wrong or when margins and histological subtypes were unclear, the patients were rejected. Moreover, one patient refused to be included in our study. Finally, 16 recurrent BCC were selected for analysis, with strict selective criteria. They were matched with non-recurrent BCC, selected from the 2010–2015 period, and defined as patients with no recurrence during a follow-up period of at least 5 years and with an average follow-up of 8.6 years. Microscopic length, deep and lateral margin were analysed. Formalin-fixed paraffin-embedded (FFPE) cutaneous resections were processed for immunohistochemistry



**FIGURE 1** Quantitative assessment of proliferation, Hedgehog pathway activation and cilia in recurrent (R) and non-recurrent (non-R) basal cell carcinoma. (a) Representative micrographs showing MCM6+ cells (MCM6, brown; nuclei are counterstained with haematoxylin) and dot plot with mean and SD. (b) Magnification corresponding to the selected area is shown Representative micrographs showing ciliated cells (ARL13B, red; nuclei are stained in blue with DAPI). Magnification corresponding to the selected area is shown.  $*p < 0.05$  and  $***p < 0.001$ ; non-R versus R. (c) Representative micrographs showing GLI1+ cells (GLI1, red; nuclei are stained in blue with DAPI) and dot plot with mean and SD

or immunostaining with the following primary antibodies: mouse anti-MCM6 (H-8, Santa Cruz Biotechnology), rabbit anti-ARL13B (17711-1-ap, ProteinTech) and rabbit anti-GLI1 (HPA065172, Sigma Aldrich). Immunoreactivity was illustrated with Ultra View Universal 3,3'-diaminobenzidine (DAB) detective kit, using the Ventana Automatic Benchmark Ultra System.

For the evaluation of MCM6-positive cells, five high-power fields with the highest number of positive nuclei were counted at 400 magnifications.

For the evaluation of GLI1 and cilia, five high-power fields at 1000 magnifications were processed for quantification.

Micrographs were acquired by Axiolmageur Zeiss (100x Ph) with ZEN software. Data were obtained and processed with the ImageJ software. The percentage of ciliated cells and the average cilia length were automatically quantified with CiliaQ on ImageJ.<sup>9</sup>

Comparisons between groups were performed using Student's tests or Wilcoxon–Mann–Whitney tests when appropriate.

No significant differences were observed between the two groups, regarding clinical and histological characteristics (Table 1), except for the size of the lesions in the group of primary tumours that eventually recurred (5.75  $\pm$  0.7 mm vs. 7.6  $\pm$  3.6 mm;  $p = 0.05$ ). We found a statistically significant increased proliferative index evaluated with MCM6 (Figure 1a; 88.60  $\pm$  7.04% vs. 59.59  $\pm$  13.52%;  $p < 0.001$ ); and a lower percentage of ciliated cells (Figure 1b; 11  $\pm$  6.4% vs. 15  $\pm$  6%;  $p = 0.041$ ) in recurrent BCC. However, no significant differences were observed regarding cilia length (0.62  $\pm$  0.17  $\mu$ m vs. 0.73  $\pm$  0.47  $\mu$ m,  $p = 0.39$ ) or GLI1-positive nuclei (Figure 1c; 53  $\pm$  22% vs. 55  $\pm$  21%;  $p = 0.83$ ).

A subgroup analysis was performed based on the classification of the recurrence risk of BCC (seven low-risk BCC and nine high-risk BCC). The results were identical and showed a statistically significant association between recurrence and cell proliferation and the decrease in the number of cilia (except for low-risk BCC). The results remained inconclusive for GLI1.

### 3 | DISCUSSION

In this study, we demonstrated that recurrence of BCC was associated with a higher MCM6 proliferative index, with relative slightly dispersed values. This was an important observation since Ki67 assessments were often inconclusive in BCC immunohistochemistry analyses because of a large dispersion of the results. This was further associated with a decrease in ciliated cells.

The originality of our approach lies in the evaluation of an additional proliferation-associated marker (MCM6-antibody), and in the automated computer-assisted evaluation of cilia on FFPE tissue sections with ARL13B staining instead of acetylated-tubulin which provides a more robust evaluation of ciliated cells.<sup>10</sup> Molecular mechanisms driving the development of BCC are not completely elucidated. Here we highlighted that recurrence was not specifically associated with Hedgehog signalling reactivation in BCC. It was previously reported that BCC recurrence could be linked to the activation of other signalling pathways, intimately linked with Hedgehog pathway and cilia formation, such as Wnt, NOTCH or EGFR and that a cross-talk existed between these signalling pathway.<sup>11</sup> It will be interesting to explore these complex cross-talks in the light of our preliminary findings in future analyses. The evaluation of GLI1 intensity profile with a semi-quantitative scale may bring additional information. However, due to the high variability of the immunostainings within the same series of specimen, the

sample size should be enlarged to apply this method. To consolidate our analysis, additional experimental investigations are required to increase the number of patients, the localizations of BCC, and the quantitative parameters.

In conclusion, we have shown that a higher proliferative index evaluated with MCM6 antibody could be a useful prognosis marker of BCC risk of recurrence. The lower cilia count in the primary lesion (evaluated with ARL13B) unveiled novel perspectives to understand BCC recurrence molecular mechanisms.

### ACKNOWLEDGEMENTS

We thank the members of the Inserm UMR-S 1250 for their helpful comments and insights. We thank the technicians from the service of pathology of the CHU Robert Debré of Reims and from the medical university of Reims Champagne-Ardenne. This work was supported by the French National Institute of Health and Medical Research (Inserm) and the University of Reims Champagne-Ardenne. We thank members of Reims biological resources platform.

### CONFLICT OF INTEREST

Valérien Dormoy reports personal fees from Chiesi outside the submitted work.

### AUTHOR CONTRIBUTIONS

**A. Jacquet:** Conceptualization, Data curation, Formal analysis, Funding acquisition, Investigation, Methodology, Project administration, Resources, Software, Supervision, Validation, Visualization, Writing – original draft, Writing – review & editing. **V. Dormoy:** Conceptualization, Data curation, Formal analysis, Funding acquisition, Investigation, Methodology, Project administration, Resources, Software, Supervision, Validation, Visualization, Writing – original draft, Writing – review & editing. **M. Lorenzato:** Conceptualization, Data curation, Formal analysis, Methodology, Supervision, Writing – original draft, Writing – review & editing. **A. Durlach:** Conceptualization, Data curation, Formal analysis, Funding acquisition, Investigation, Methodology, Project administration, Resources, Software, Supervision, Validation, Visualization, Writing – original draft, Writing – review & editing.

### DATA AVAILABILITY STATEMENT

The data that support the findings of this study are available on request from the corresponding author. The data are not publicly available due to privacy or ethical restrictions.

### ORCID

V. Dormoy  <https://orcid.org/0000-0003-1725-371X>

A. Durlach  <https://orcid.org/0000-0002-3330-3505>



## REFERENCES

1. Cameron MC, Lee E, Hibler BP, Barker CA, Mori S, Cordova M, et al. Basal cell carcinoma: epidemiology; pathophysiology; clinical and histological subtypes; and disease associations. *J Am Acad Dermatol*. 2019;80(2):303–17.
2. Peris K, Fagnoli MC, Garbe C, Kaufmann R, Bastholt L, Seguin NB, et al. Diagnosis and treatment of basal cell carcinoma: European consensus-based interdisciplinary guidelines. *Eur J Cancer*. 2019;118:10–34.
3. Florescu D, Stepan AE, Mărgăritescu C, Stepan D, Simionescu CE. Proliferative activity in basal cell carcinomas. *Curr Health Sci J*. 2018;44(1):55–60.
4. Yerebakan O, Ciftçioğlu MA, Akkaya BK, Yılmaz E. Prognostic value of Ki-67, CD31 and epidermal growth factor receptor expression in basal cell carcinoma. *J Dermatol*. 2003;30(1):33–41.
5. Tye BK. MCM proteins in DNA replication. *Annu Rev Biochem*. 1999;68:649–86.
6. Zeng T, Guan Y, Li Y-K, Wu Q, Tang X-J, Zeng X, et al. The DNA replication regulator MCM6: an emerging cancer biomarker and target. *Clin Chim Acta*. 2021;517:92–8.
7. Pandolfi S, Stecca B. Hedgehog-Gli signaling in basal cell carcinoma and other skin cancers: prospects for therapy. *Res Rep Biol*. 2015;6:55-71. Dove Press.
8. Hua K, Ferland RJ. Fixation methods can differentially affect ciliary protein immunolabeling. *Cilia*. 2017;6:5.
9. Hansen JN, Rassmann S, Stüven B, Jurisch-Yaksi N, Wachten D. CiliaQ: a simple, open-source software for automated quantification of ciliary morphology and fluorescence in 2D, 3D, and 4D images. *Eur Phys J E Soft Matter*. 2021;44(2).
10. Yasar B, Linton K, Slater C, Byers R. Primary cilia are increased in number and demonstrate structural abnormalities in human cancer. *J Clin Pathol*. 2017;70(7):571–4.
11. Noubissi FK, Yedjou CG, Spiegelman VS, Tchounwou PB. Cross-talk between Wnt and Hh signaling pathways in the pathology of basal cell carcinoma. *Int J Environ Res Public Health*. 2018;15(7).

**How to cite this article:** Jacquet A, Dormoy V, Lorenzato M, Durlach A. Preliminary results on a proposed histopathological assessment of predictive factors for basal cell carcinoma recurrence after primary free margin excision. *Skin Health Dis*. 2022;2(2):e88. <https://doi.org/10.1002/ski2.88>